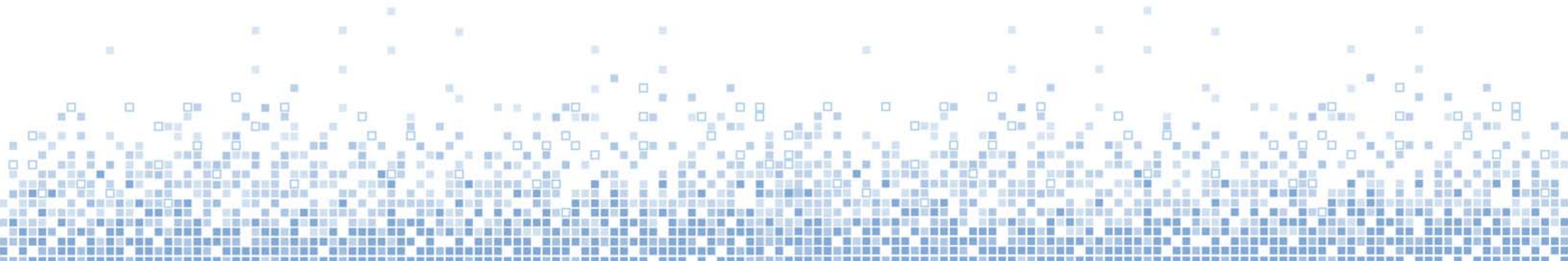


Robust and Resilient PNT: Today's Requirement

Dr Sally Basker

CGSIC, Savannah, 21 September 2009



Argo

Maxtran

Miniranger

Omega

Hydrotrac

Syledis

Decca

Geoloc

GPS

Pulse 8

Loran

Raydist N

Hyperfix

Spot

Transit

Artemis

Lorac

Trident

Raydist DRS

Toran

Trisponder

MicroFix



GPS is vulnerable at system, signal and user levels

	Vulnerability Examples	Possible Mitigation
System	Satellite clock failures (e.g. SVN23, 1 Jan 2004)	Second system or augmentation (e.g. Galileo, eLoran, SBAS)
	Poor signal quality (e.g. evil waveforms)	Second system or augmentation (e.g. Galileo, eLoran, SBAS)
	Design flaws (e.g. Block IIR ranging code interruptions)	Second system or augmentation (e.g. Galileo, eLoran, SBAS)
Signal	Intentional interference (e.g. potential terrorism)	Second dissimilar system (e.g. eLoran)
	Unintentional interference (e.g. Moss Landing)	Second system, other GNSS frequencies (e.g. e-Loran, L2C, L5)
	Ionospheric effects (e.g. scintillation at high latitudes or equator)	Second dissimilar system (e.g. e-Loran)
User	Equipment malfunction (e.g. Royal Majesty, 1995)	Second dissimilar system (e.g. eLoran)
	Signal occultation (e.g. Urban canyons)	More SVs &/or second dissimilar system (e.g. Galileo, SBAS, eLoran)
	Local Interference (e.g. Manatoulin TV set)	Improved siting &/or second dissimilar system



Carpi

Capri

MKR: 1.5800GHz
-25.14dBm
RLV: 0.00dBm

AJG_NOISE
RB 1MHz# AT 10dB
VB 1MHz# ST 20ms

Amplitude
Reference
Level

10dB

Tr-A

Peak -> RLV

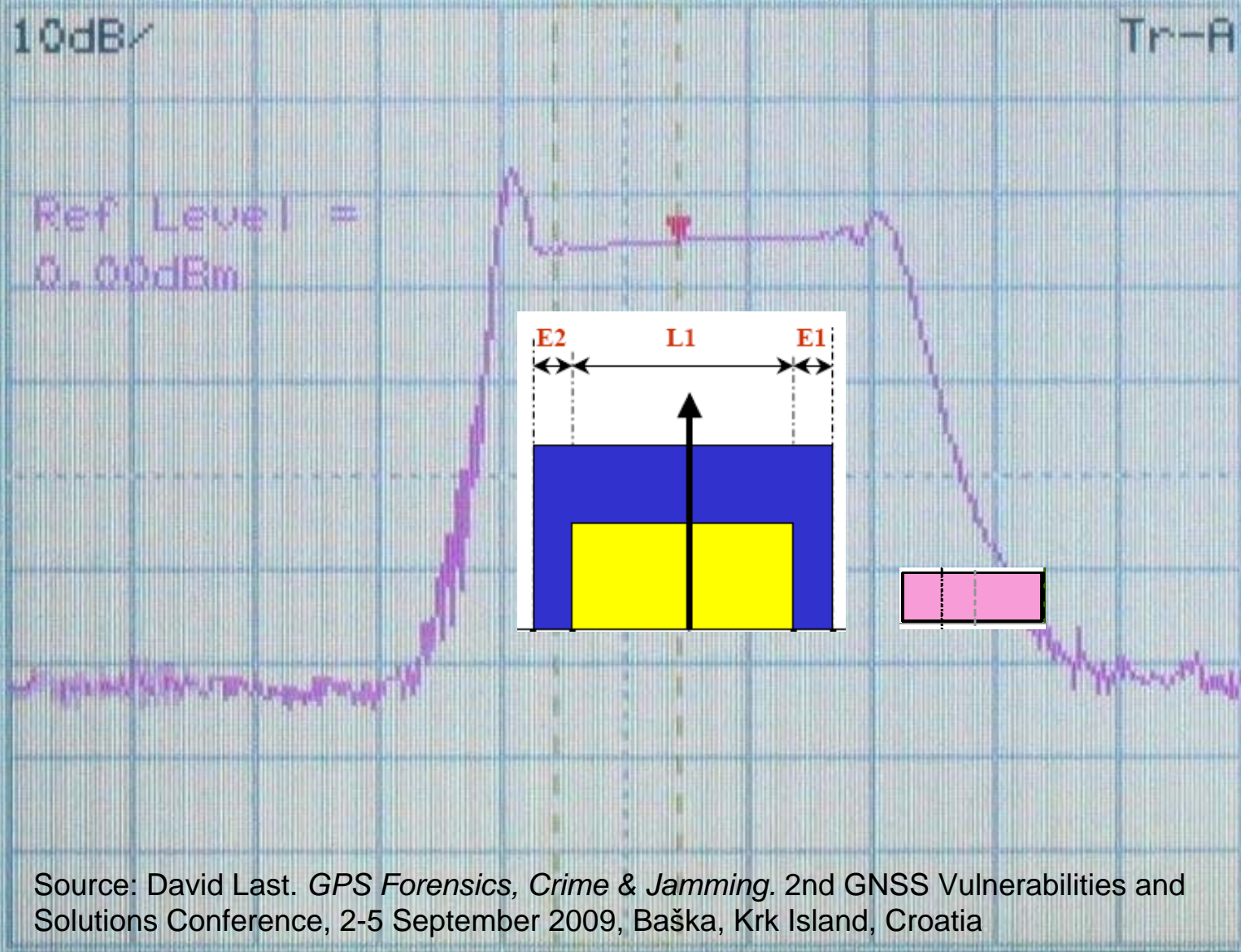
Ref Level =
0.00dBm

Ref Level
Offset

Unit

Log
Scale

Linear
Scale



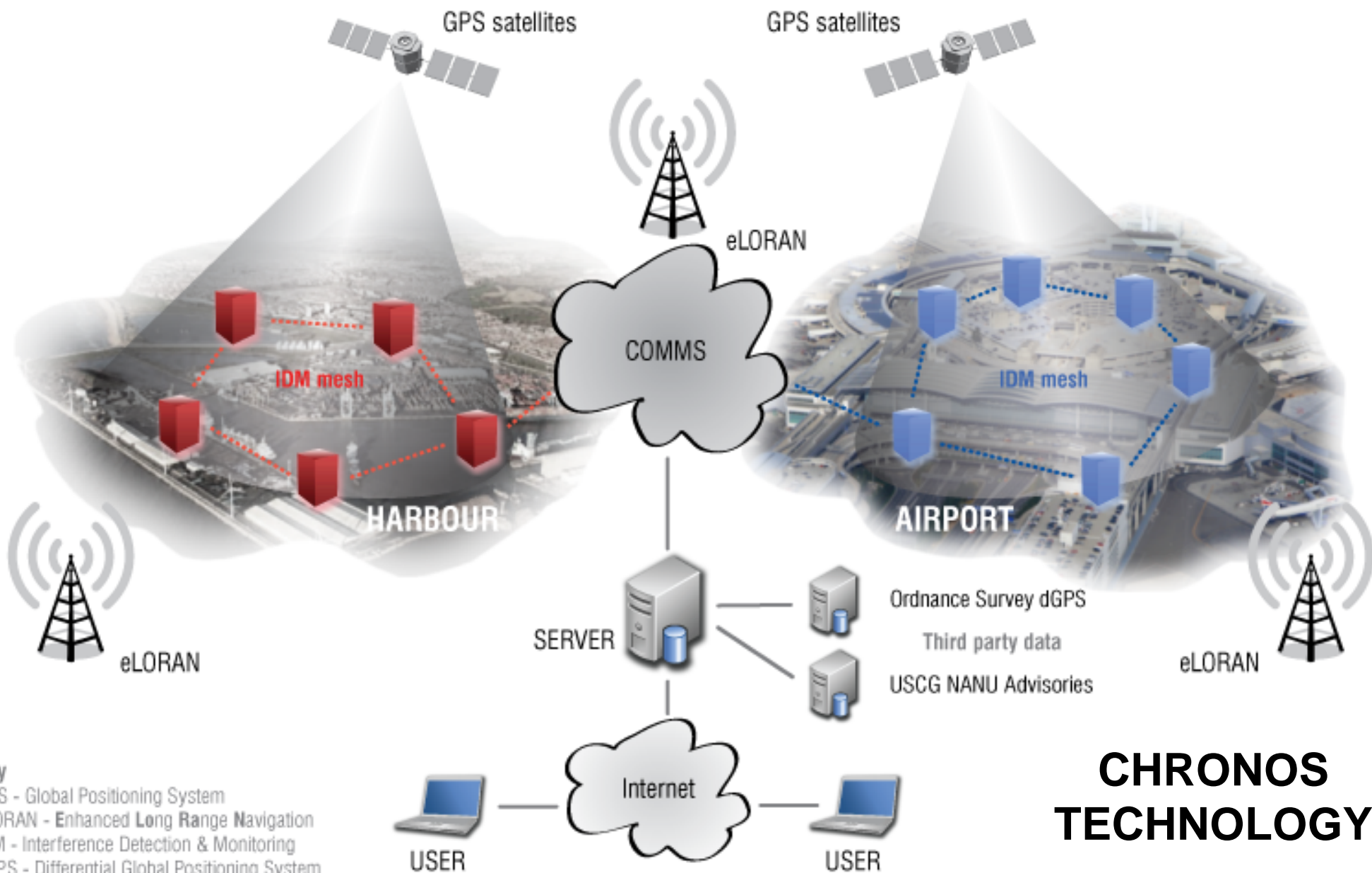
Source: David Last. *GPS Forensics, Crime & Jamming*. 2nd GNSS Vulnerabilities and Solutions Conference, 2-5 September 2009, Baška, Krk Island, Croatia

CF: 1.5754GHz

Span: 100MHz

1

GARDIAN

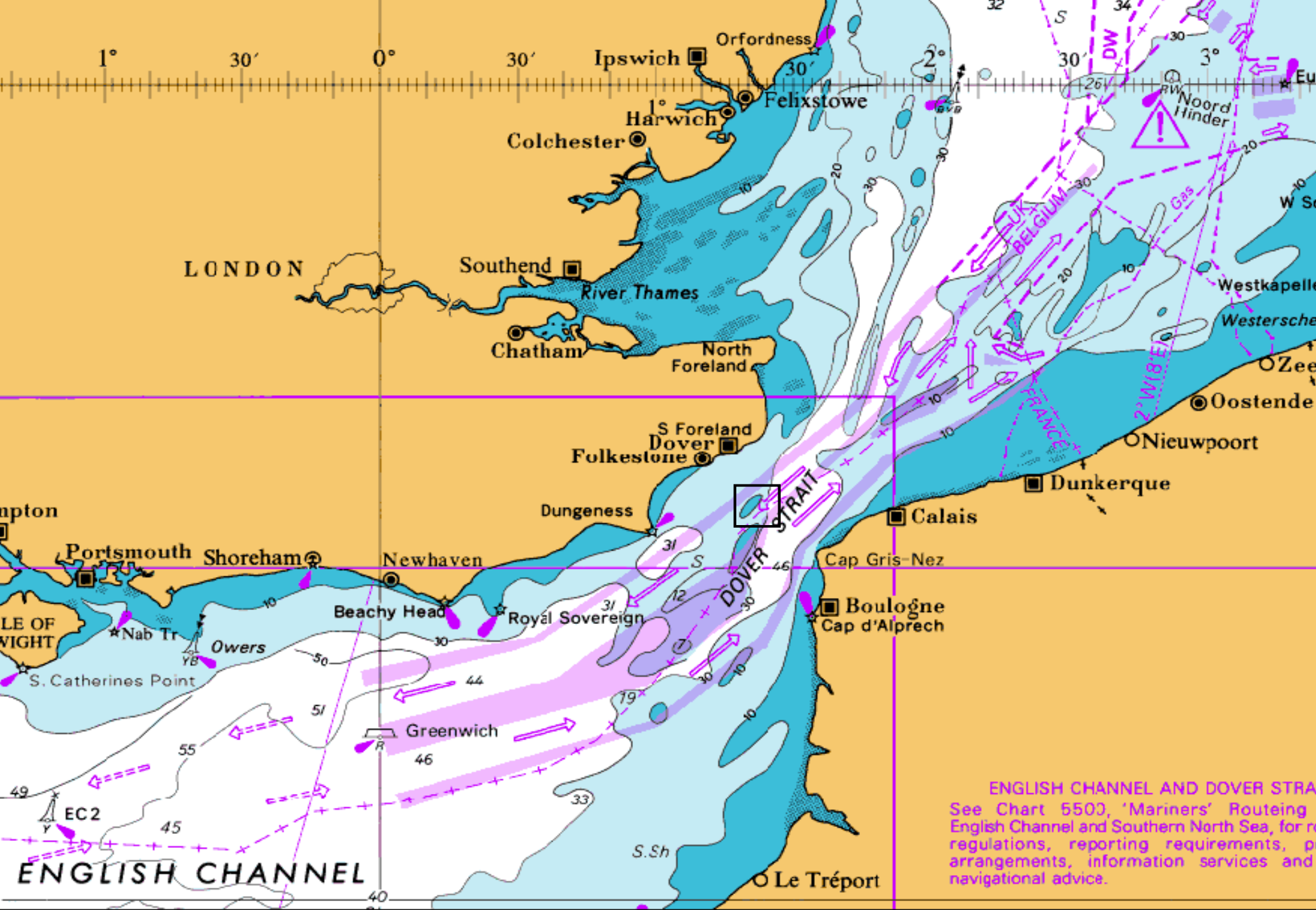


Key
GPS - Global Positioning System
eLORAN - Enhanced Long Range Navigation
IDM - Interference Detection & Monitoring
dGPS - Differential Global Positioning System

CHRONOS TECHNOLOGY

The Demand



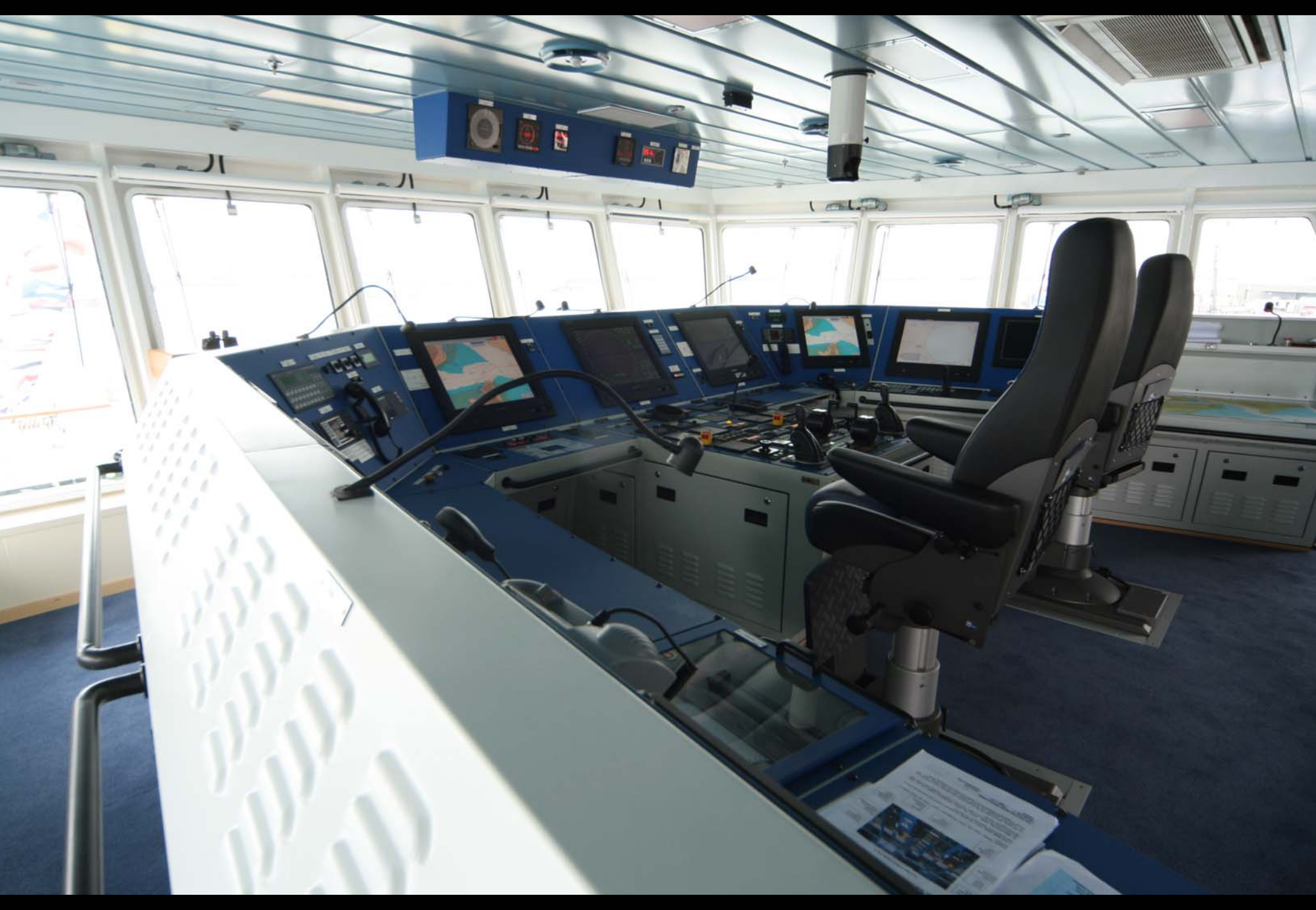


ENGLISH CHANNEL AND DOVER STRAIT
 See Chart 5503, 'Mariners' Routing
 English Channel and Southern North Sea, for
 regulations, reporting requirements, p
 arrangements, information services and
 navigational advice.

LT Cortesia Grounding, 2 January 2008









Delivering a reliable, efficient and cost-effective AtoN service for the benefit and safety of all mariners