

Country Report from Japan

**Japanese Contribution
as the QZSS service supplier**

**The 52th CGSIC Meeting
Sept 17-18, 2012 at Nashville**

Hiroshi Nishiguchi

Japan GPS Council

Cabinet Decision on 9/30/2011

- (1) Basic thoughts on promotion of full-fledged QZSS operation and management**
- (2) Implementation of strategic architecture for space exploration and utilization**

Decided strategic scheme on 7/12/2012

- (1) “Office of National Space Policy” : Command Directorate**
- (2) “Space Policy Committee” : the policy authority & supervising**

Mission of “Office of National Space Policy”

- **A role of Interagency Coordination Office**
- **Operation and management of QZSS**
- **Outreach activities**

Mission of “Space Policy Committee”

- **A committee reporting to the Prime Minister**
- **Authorization to assess important policies relating to the space exploration and budget allocation guidelines**
- **To replace the legacy “Space Exploration Committee”**

Application Demonstrations by Private Sector

As of March 31, 2012

Others (Marine Investigation, Logistic Management, etc.)

Mapping

Railway and Bus

IT Automatic Driving

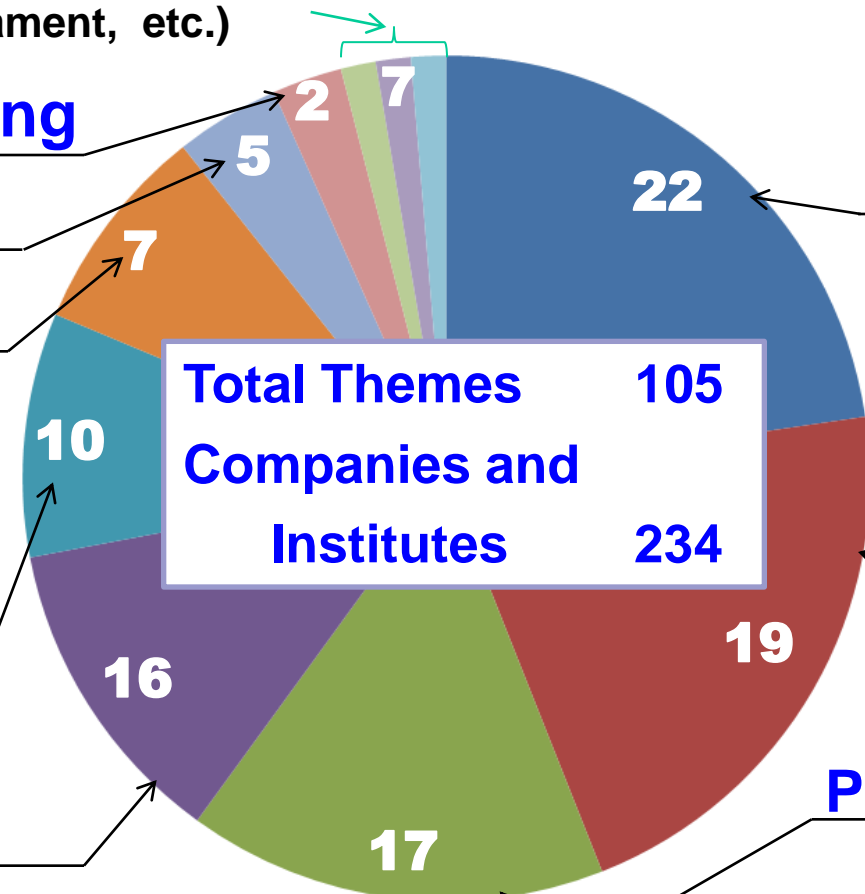
Automatic Driving for Construction, Agriculture etc.

Disaster Management

Ground Displacement, Search and Rescue etc.

Car Navigation

Driver Assistance Route Optimization etc.



Land Survey

Static and Moving Survey, Forest Survey, Cadastral Survey etc.

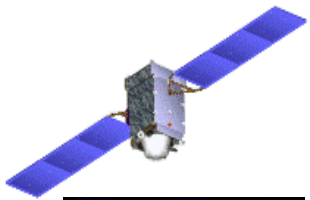
Basic Research

Verification of Basic Performance of the Augmentation

Personal Navigation

Navigation for Disabled and Aged persons, Tourist Navigation etc.

L1-SAIF Application : Personal Navigation



Car navigation



Identified place & Historical site



Restaurant



Public accommodation

Movie theater



コンテンツ

歩行者ナビゲーション(スマホ)

誘導地図画面 誘導案内 観光スポット

NEXT LEFT Kiyomizuteru temple and the...

公共交通

From: Kyoto St To: Kiyomizuteru

Karasuma Bus Stop-A2

お食事案内

△△センター 9:00~17:30~

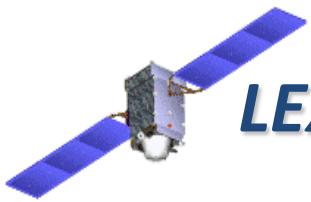
〇〇食堂 (〇〇 retro buffet)

緊急メニュー

緊急メニュー

ヘルプ

List of contents



LEX Application: IT Aided Automatic Operation

Mobile Mapping & IT Aided Precise Farming Operation Demonstration (Feb.7-9 @ NIRE)

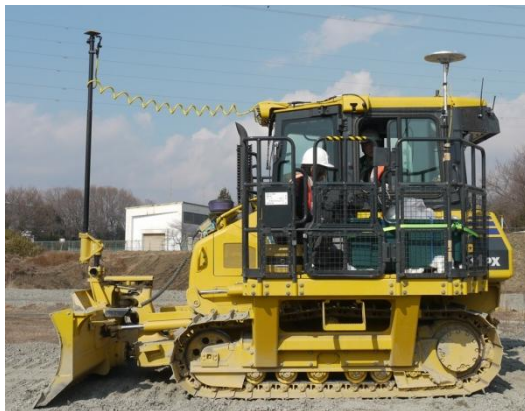


Mobile Mapping



Precise Farming

IT Aided Construction Demonstration (Feb.7-9 @ JCMA)



After bladed

Multi-GNSS Demonstration Campaign

ORGANIZATION: STRUCTURE OF MGA

MGA Member

Co Chairs

Prof. Akio Yasuda, Tokyo University of Marine Science and Technology

Prof. Chris Rizos, University of New South Wales

Steering Committee

Secretariat

JAXA

Observer

Government agencies and international organizations related to GNSS utilization in the region

Network Sub-Committee

MGA Member will participate in either group or committee

Precise Positioning WG

Working Groups

Disaster Management WG

Team Tsunami Monitoring

ITS WG

Team GNSS Meteorology

LBS WG

Team Landslide Monitoring



Multi-GNSS Demonstration Campaign

3 MAIN ACTIVITIES

1. Multi-GNSS Monitoring Network



2. Application Demonstration

Disaster Mitigation



Precise Positioning



ITS



LBS



Others, ionospheric observation etc

3. Regional Workshop

3rd Workshop, Nov. 2011
@ Jeju, Korea:

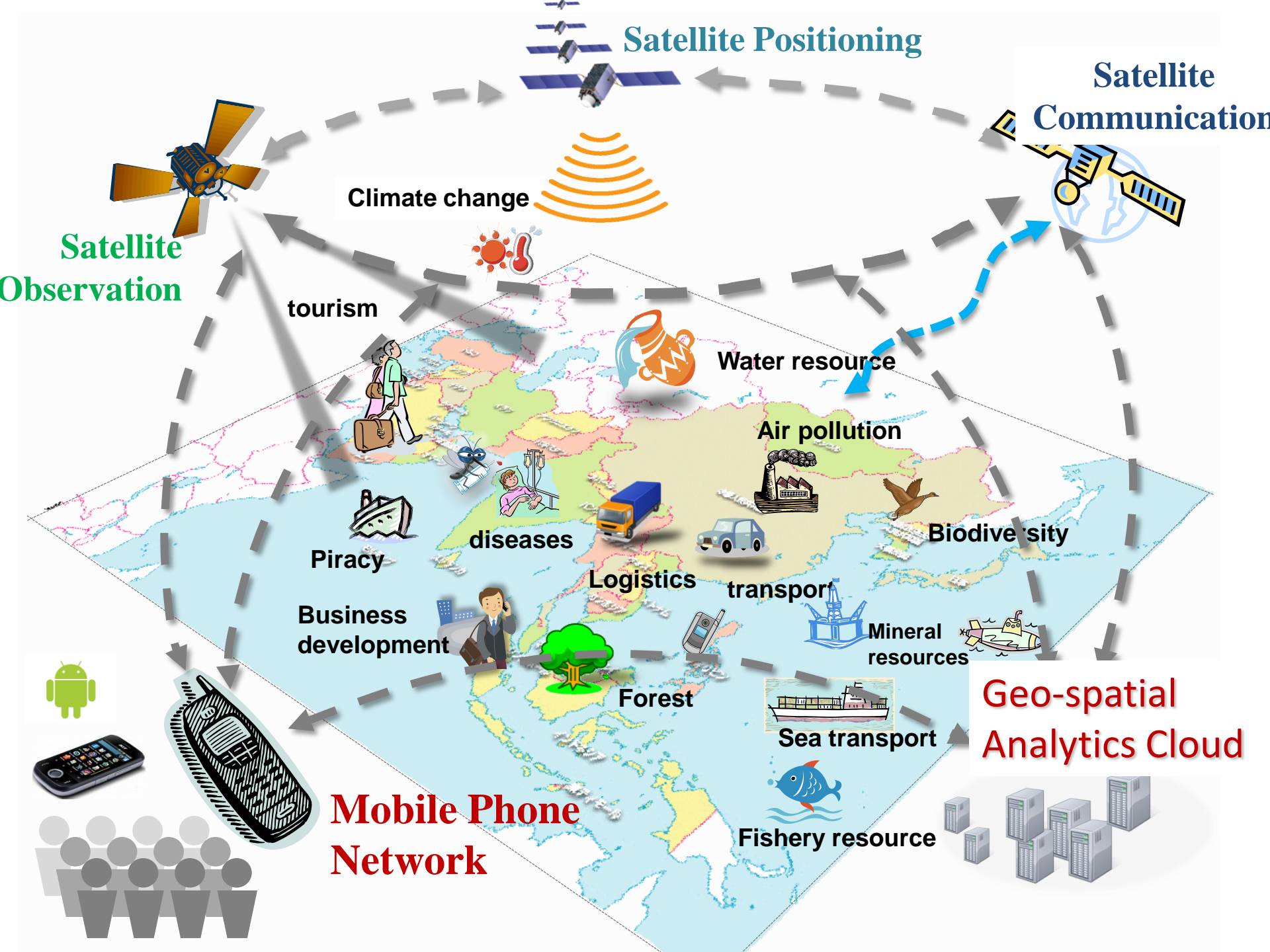


2nd Workshop, Nov. 2010
@ Melbourne, Australia



1st Workshop on GNSS,
JAN. 2010, @ Bangkok,
Thailand





Importance in the Multi GNSS era

- **The US-Japan cooperation based on the bilateral government consultation on GPS, and multi-lateral conference on the ICG in the UN.**
- **Government of Japan decided to undertake primary responsibilities to direct the GNSS issues.**
- **One of JGPSC roles has been successfully achieved**

Thanks to the generous cooperation and contributions !