

# Green Field Ag

Positioning Farmers for Success!



## Agriculture Technology Experts

*GPS – Flow and Application Control – Farm Drainage  
Planter And Precision Tillage Solutions*

**Matthew Liskai** @agGPSMatt

*211 Main St - Helena, Ohio 43435*

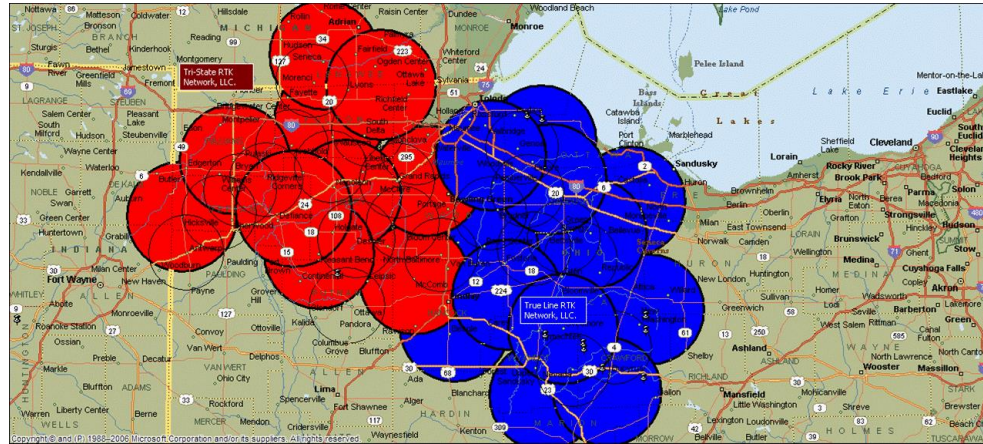






**2003 First Auto Steer  
Demonstration in NW Ohio**

# -2005 Started Two NW Ohio High Accuracy RTK GPS Networks

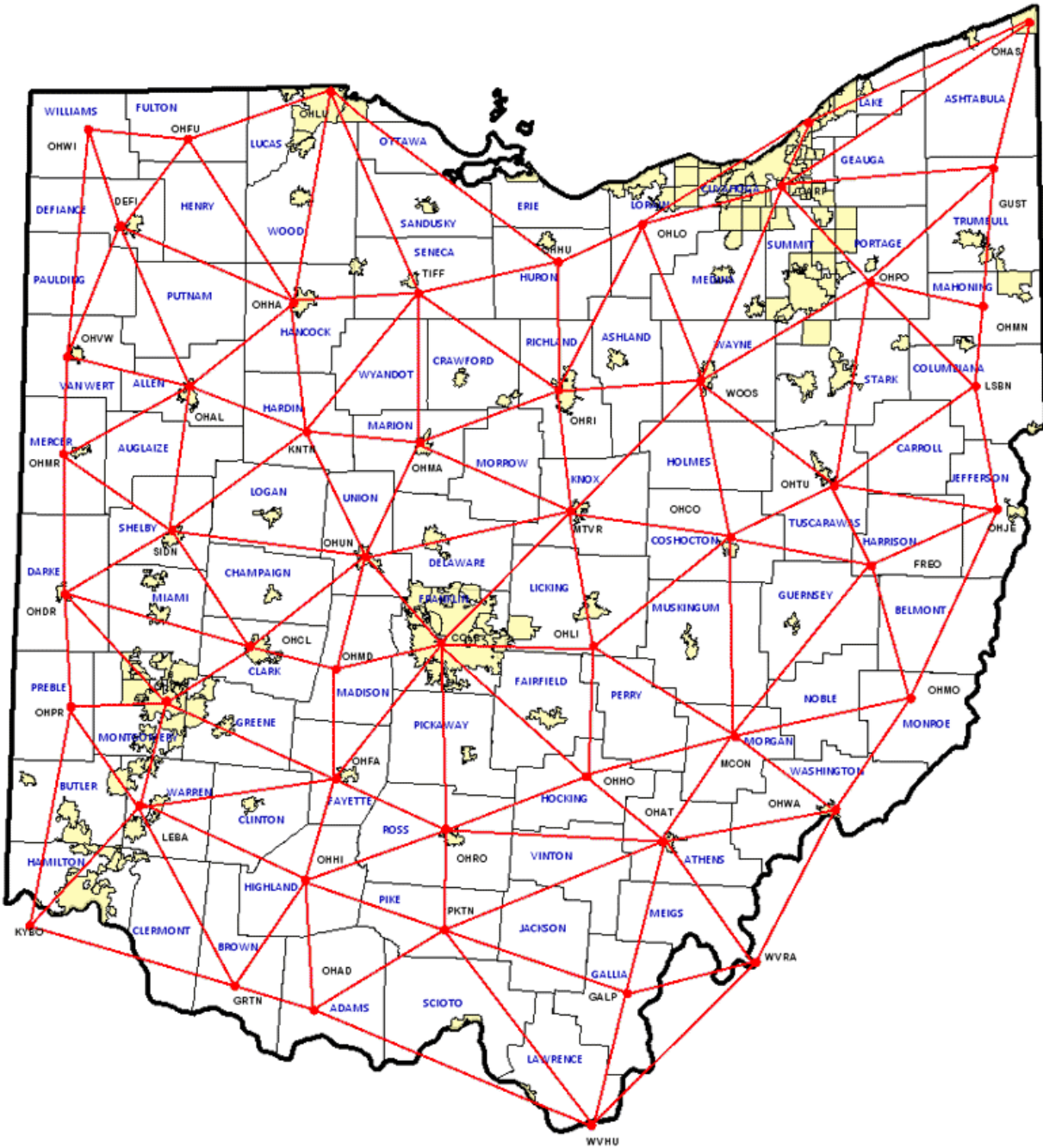
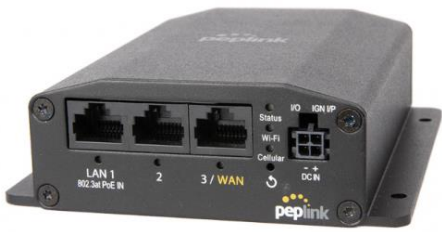




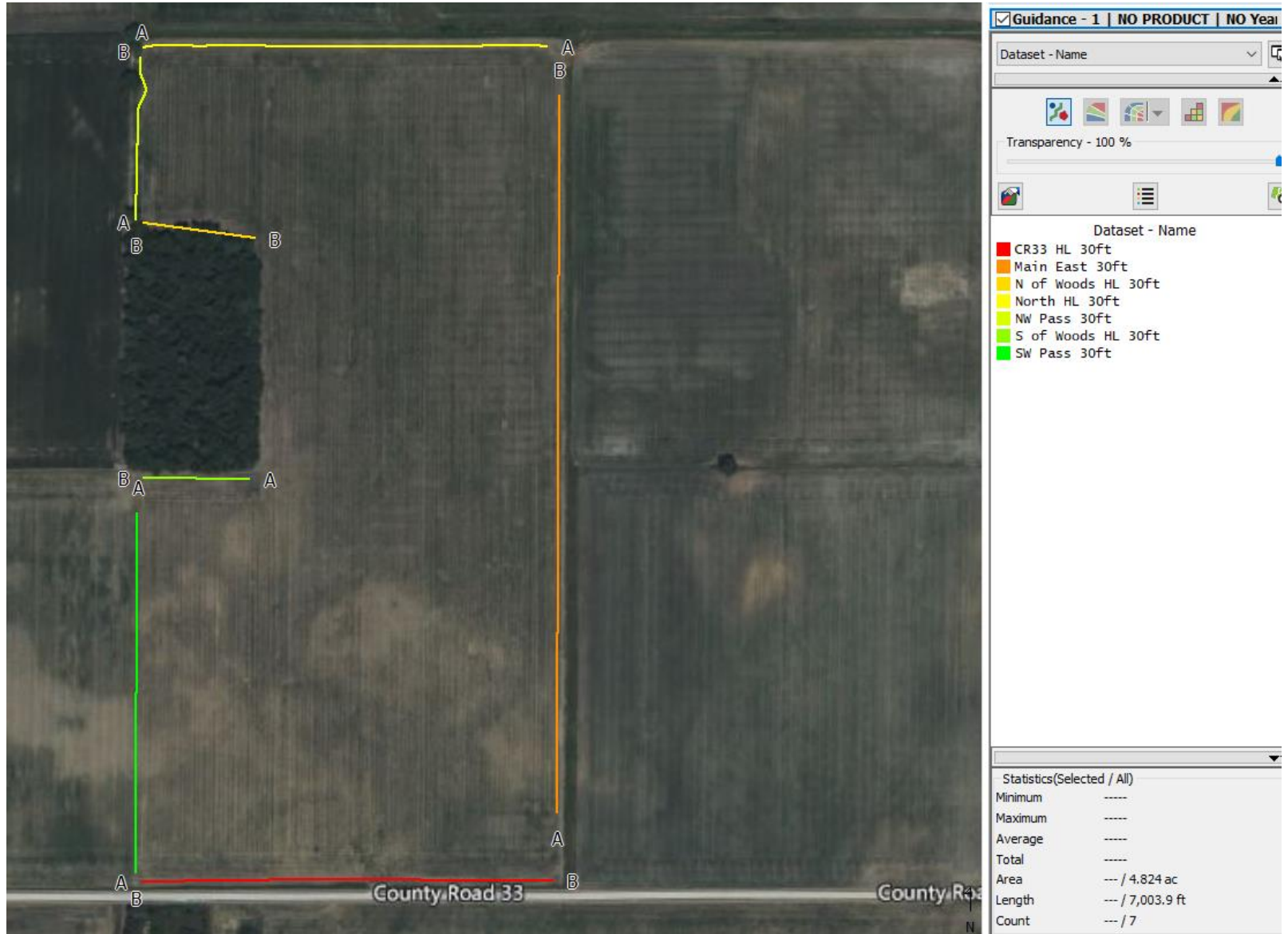


Fall 2008

# ODOT VRS NETWORK Cell Based



# A-B Line Management





# Sub Inch Repeatable Accuracy





June 2018



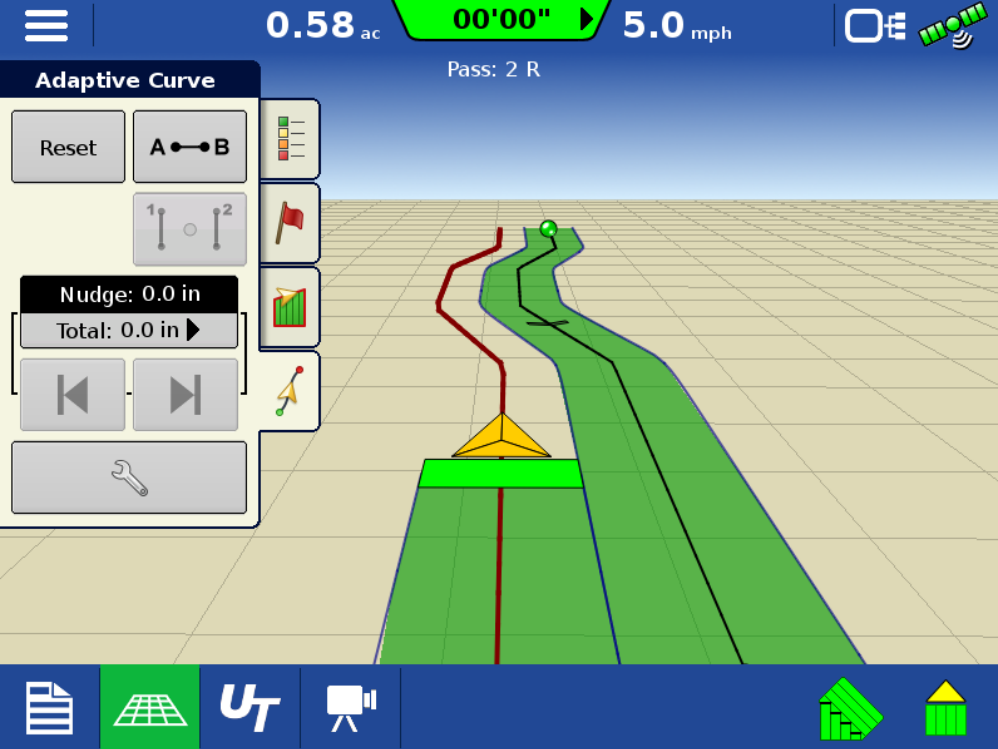
Oct 2017



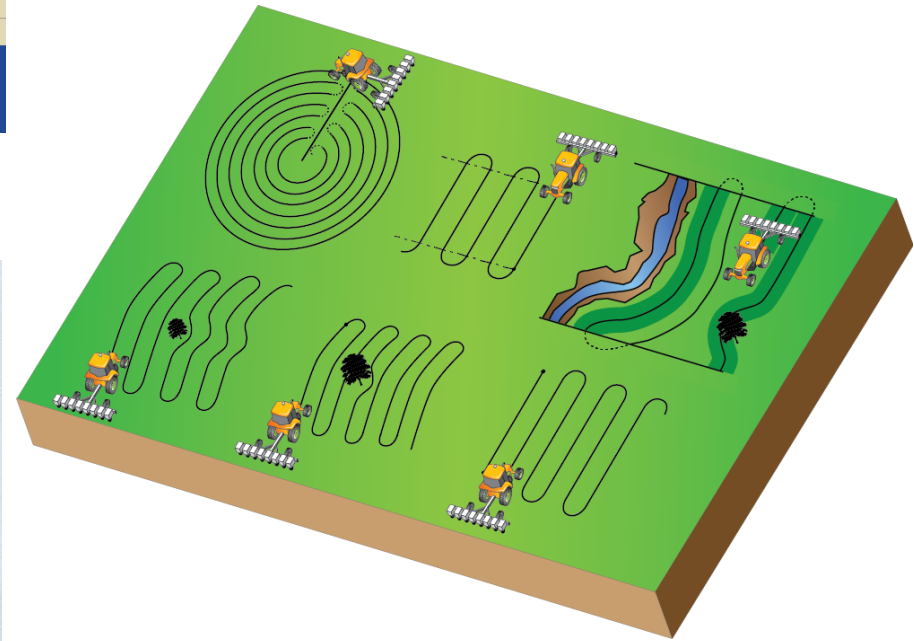
April 2018



May 2018



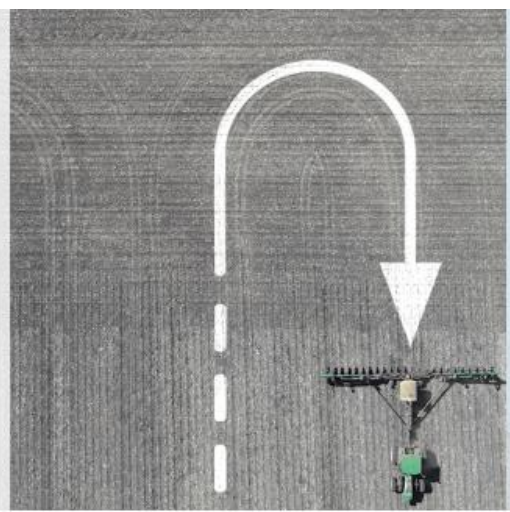
# Guidance – Control – Record – Analyze



## Now Available: *TurnPath™*

Ag Leader has made guidance easier than ever with our newest feature, TurnPath, by eliminating the guesswork and reducing the stress associated with end-row turns.

[LEARN MORE](#)





# Cloud Based Record Keeping and VRT file transfer

The interface displays a map of a field with a green overlay indicating a Variable Rate Treatment (VRT) area. The map is titled "HOME2" and "2022 Fertilizing (Dry)". The right-hand side of the interface shows a data panel for "2022 Fertilizing (Dry)" and "2021 Planting - 1".

**2022 Fertilizing (Dry) MAP**

Rate (Mass) (lb/ac)
118.5 Current
118.5 Average

Rate Quality: Good  
Product Name: MAP  
Date / Time: 10/14/2022  
Target Rate (Mass): 117.0 (lb/ac)

**2021 Planting - 1**

Population
34.59 (kodi/ac)

The bottom section of the interface shows a file management view with a search bar and a list of files. The files are listed in a table:

File Name	Description	Date	Size	More
Boundaries_642018.agsetup	Boundaries_642018.agsetup	6/4/2018 7:51 AM	37.89 KB	More
StripTill_9152021.agsetup	StripTill_9152021.agsetup	9/23/2021 4:29 PM	119.89 KB	More
wass_9302021.agsetup	wass_9302021.agsetup	9/30/2021 9:33 AM	568.39 KB	More
2021-10-01_09-22-23.agsetup	2021-10-01_09-22-23.agsetup	10/1/2021 9:22 AM	203.89 KB	More
DefaultSetup_1012021_1.agsetup	DefaultSetup_1012021_1.agsetup	10/1/2021 2:42 PM	10.89 KB	More

Files 1 - 5 of 36 [view more...](#)

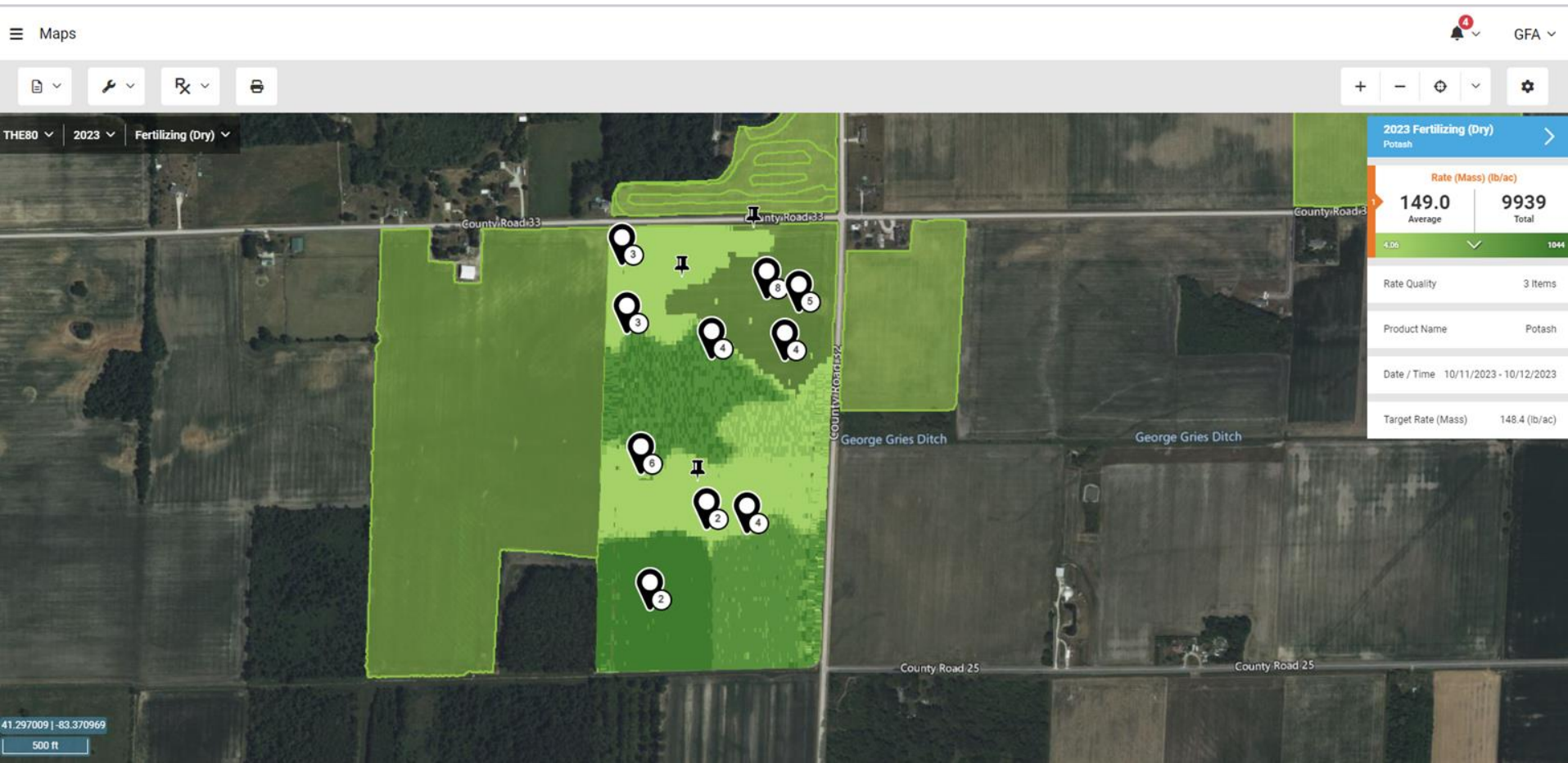
Storage Used: 200.45 MB of 250.00 GB

Terms of Use | Privacy Policy | Contact Us  
© 2014-2023 Ag Leader Technology, All Rights Reserved

AgFiniti®  
Powered By  
Ag Leader

# Post Processing of Data

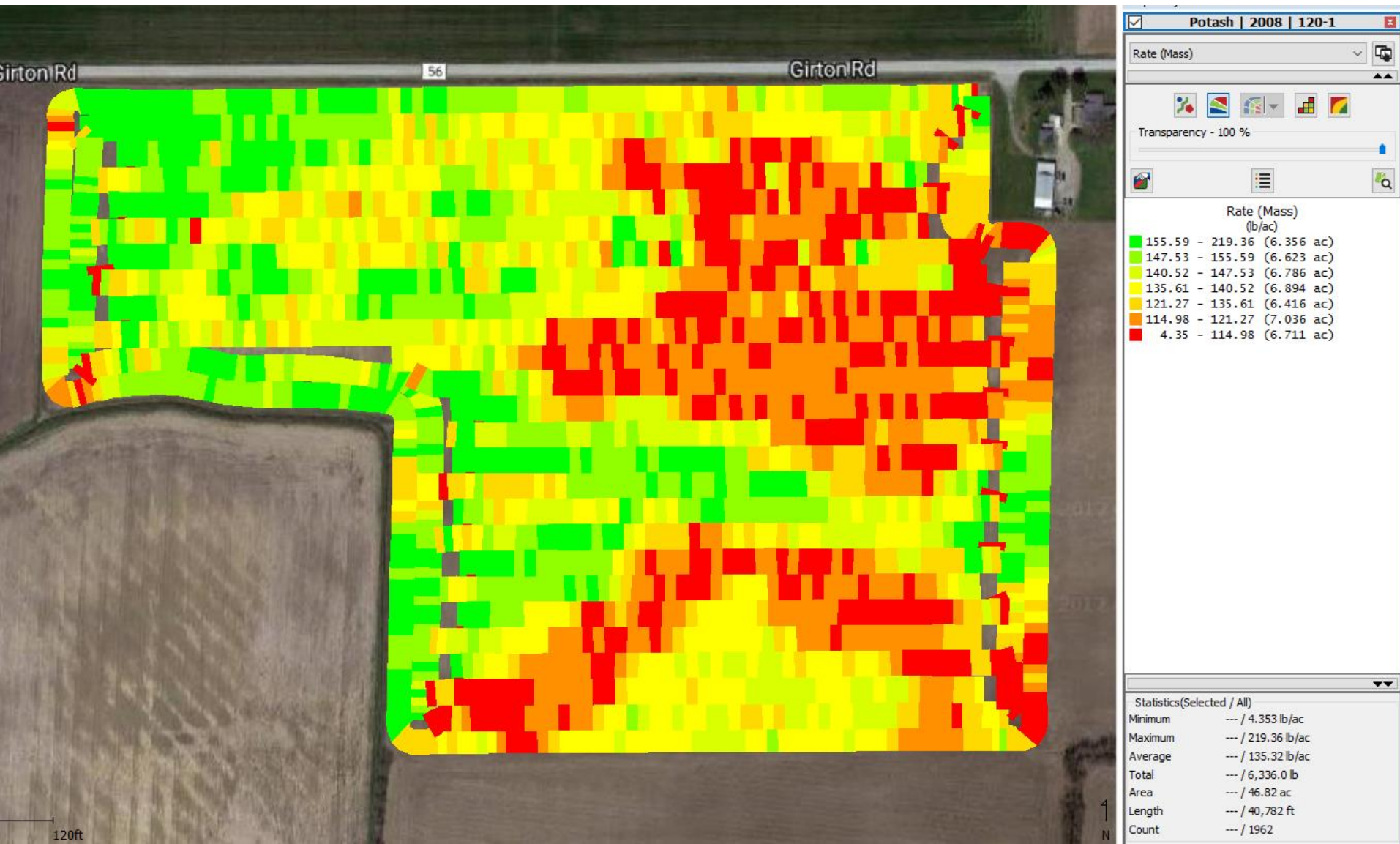
-Ability to produce “As Applied” accurate maps.



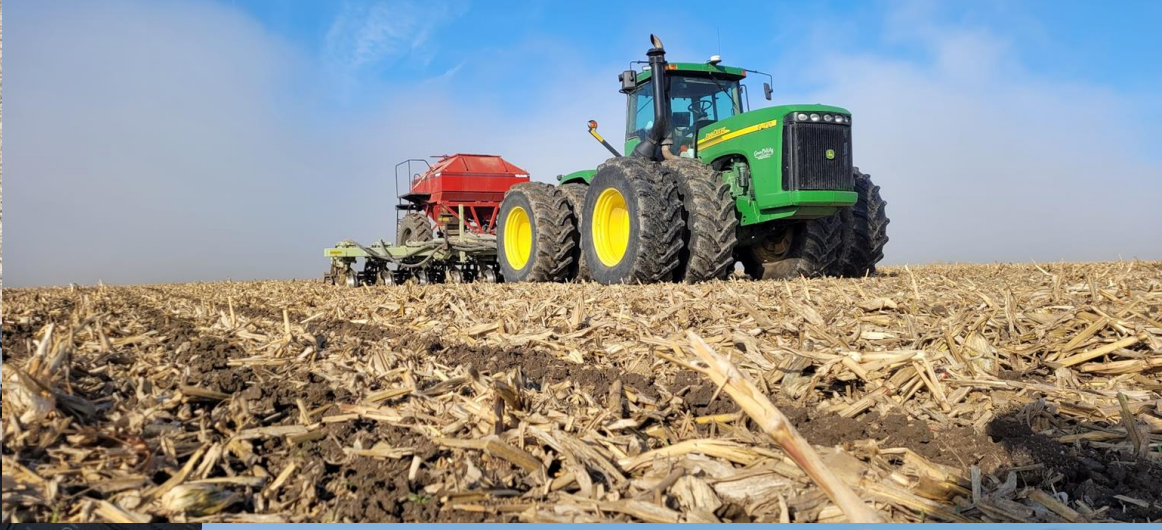
# Fertilizer Application Technology



# Spinner Spreader VRT Application

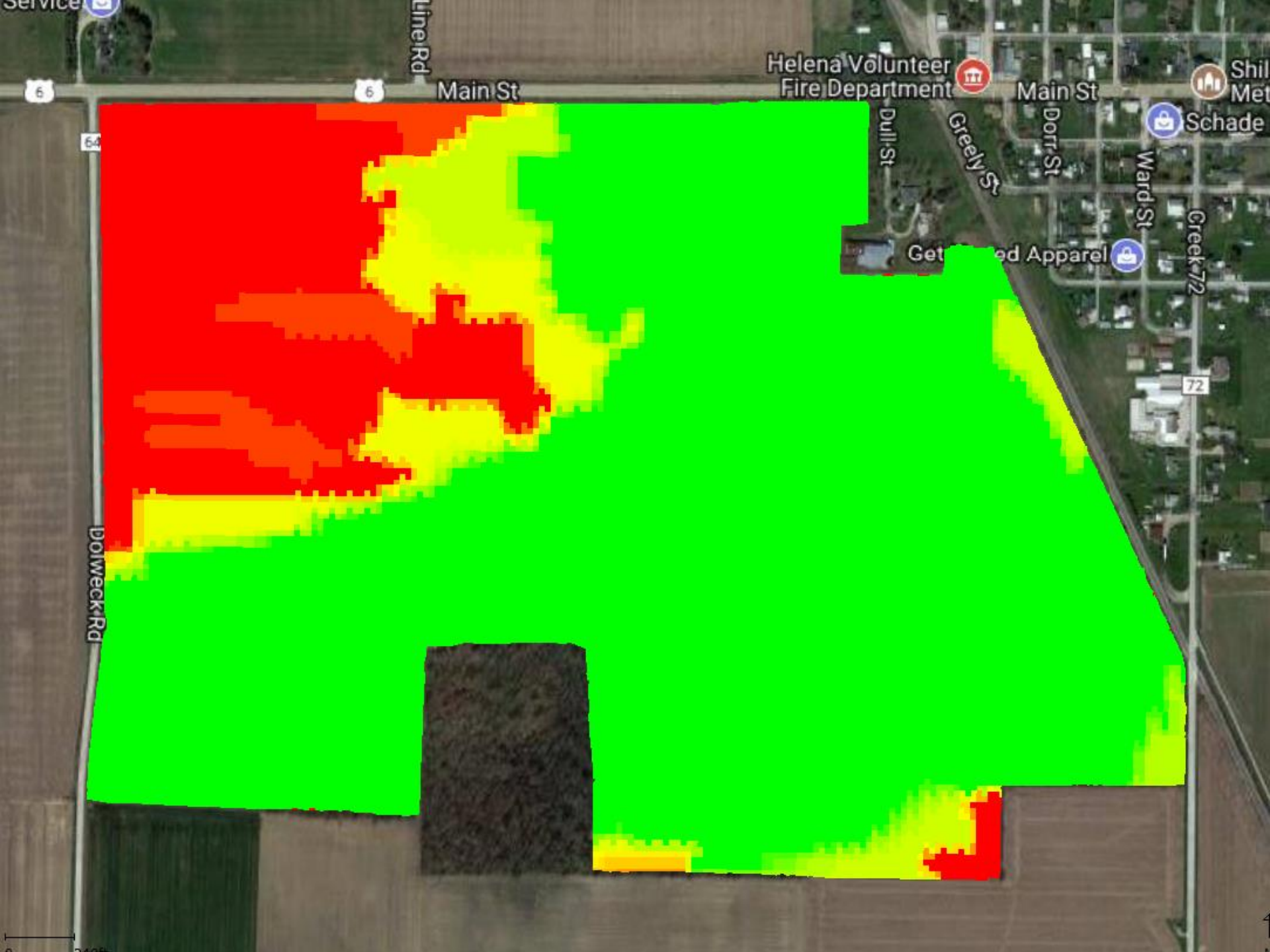






# Potash Fertilizer VRT 12 Row Strip Till





Service

Line Rd

Helena Volunteer Fire Department

Shil Met

6

6

Main St

Main St

64

Dull St

Greely St

Dorr St

Schade

Ward St

Creek St

72

Get Red Apparel

Dorweck Rd

0 200

# Clarity™

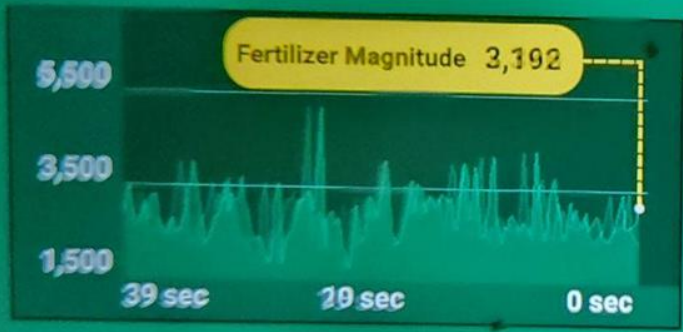
## Advanced flow and blockage metrics

Precision Planting®

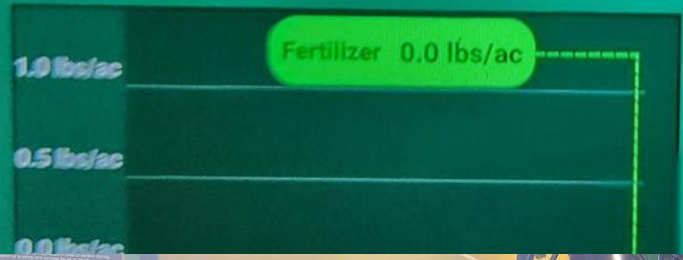


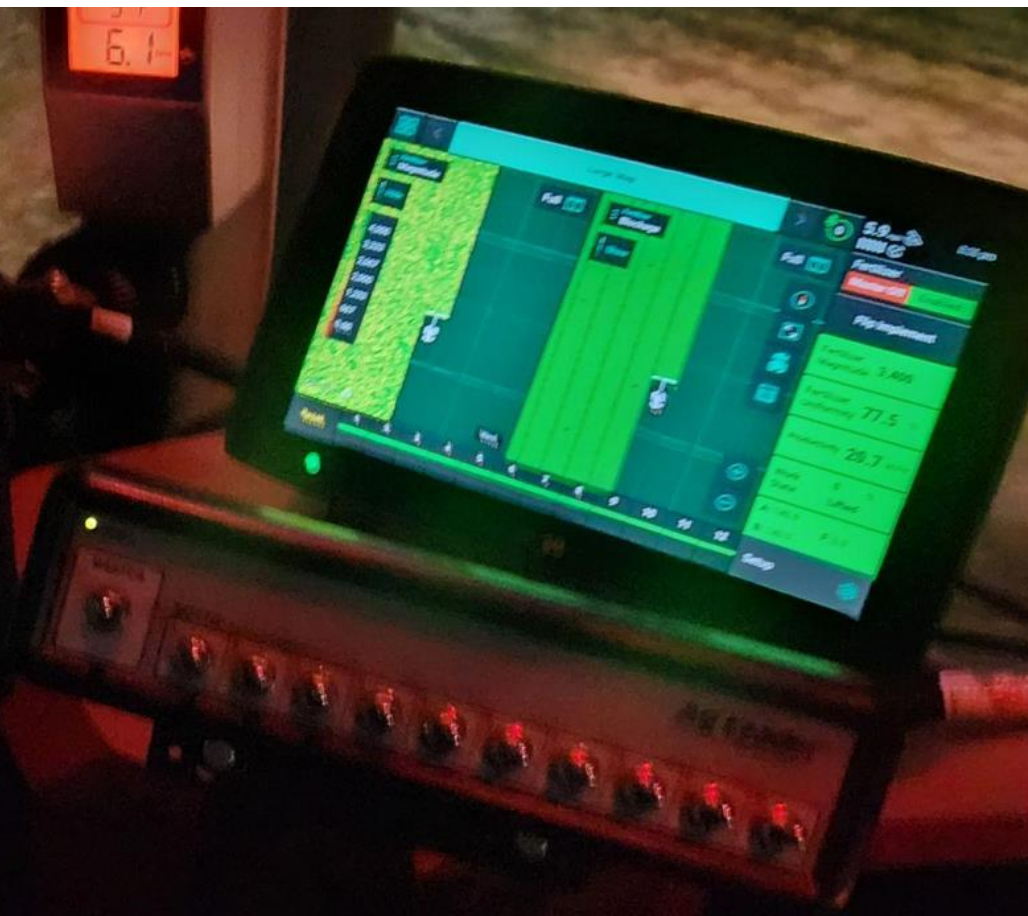
# Fertilizer > Row 1 Details

48 →  
III Ⓞ



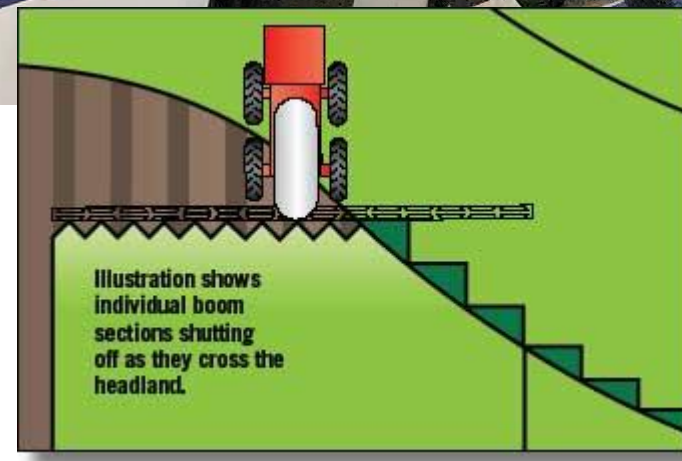
Implement  
Fertilizer





# Sprayer Technology







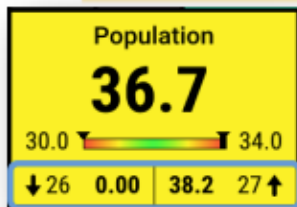
# Planter Technology

## Perfect Singulation

The flat disk, combined with a singulator that is riding on the edge of the disk and knocks off extra seeds, means the singulation accuracy in corn and soybeans will be over 99%.



# 20|20 GEN 3—HOME SCREEN LAYOUT



There are 3 types of default dashboards: **Standard** - includes a large map with metrics on both sides (displayed below), **Metrics**—small map with various metrics, or **Large Map**—full screen map.

The **Notification Center** button on the home page will give a number indicating the number of **Event Codes** that have taken place since the last reset.

**CAUTION**—If **"Master"** appears next to speed or **"Safety Mode"** on the Control Buttons, the master switch must be toggled.

High and low rows and data for those rows.

Metrics buttons or widgets display a variety of data. Rows that exceed alarm values will turn red while rows that exceed alert values will turn yellow. Touching the button will open the **Row Detail** screen.



Some large metric buttons display a **Distribution Chart** showing each row represented by a triangle and the average of all rows by a vertical mark.

**Yellow** rows are swathed off.

Active hybrid displayed: **orange** represents hybrid 1. For multi-hybrid, hybrid 2 rows will be represented by **blue**.

The **DashBoard Mini Chart** shows a bar chart for one of the metrics of the 20|20 for each row. Rows that exceed alert values will turn yellow while rows that exceed alarm values will turn red.

**Note:** **Alert** and **Alarm** values can be set in the **Crops** menu—**Setup>Crops** then select **Limit Adjustment, Liquid Alerts, SmartFirmer, or FurrowForce**.

Standard Metrics Large Map

Population 36.7

Singulation 99.8 %

Down Force

Margin 48.0 lbs

Ground Contact 100 %

Mini Chart

Notification Center: 10

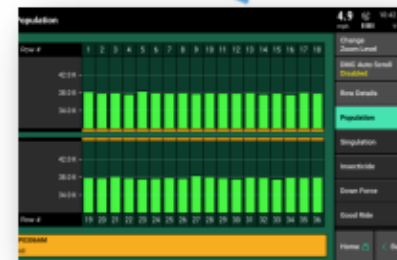
Speed: 5.7 mph

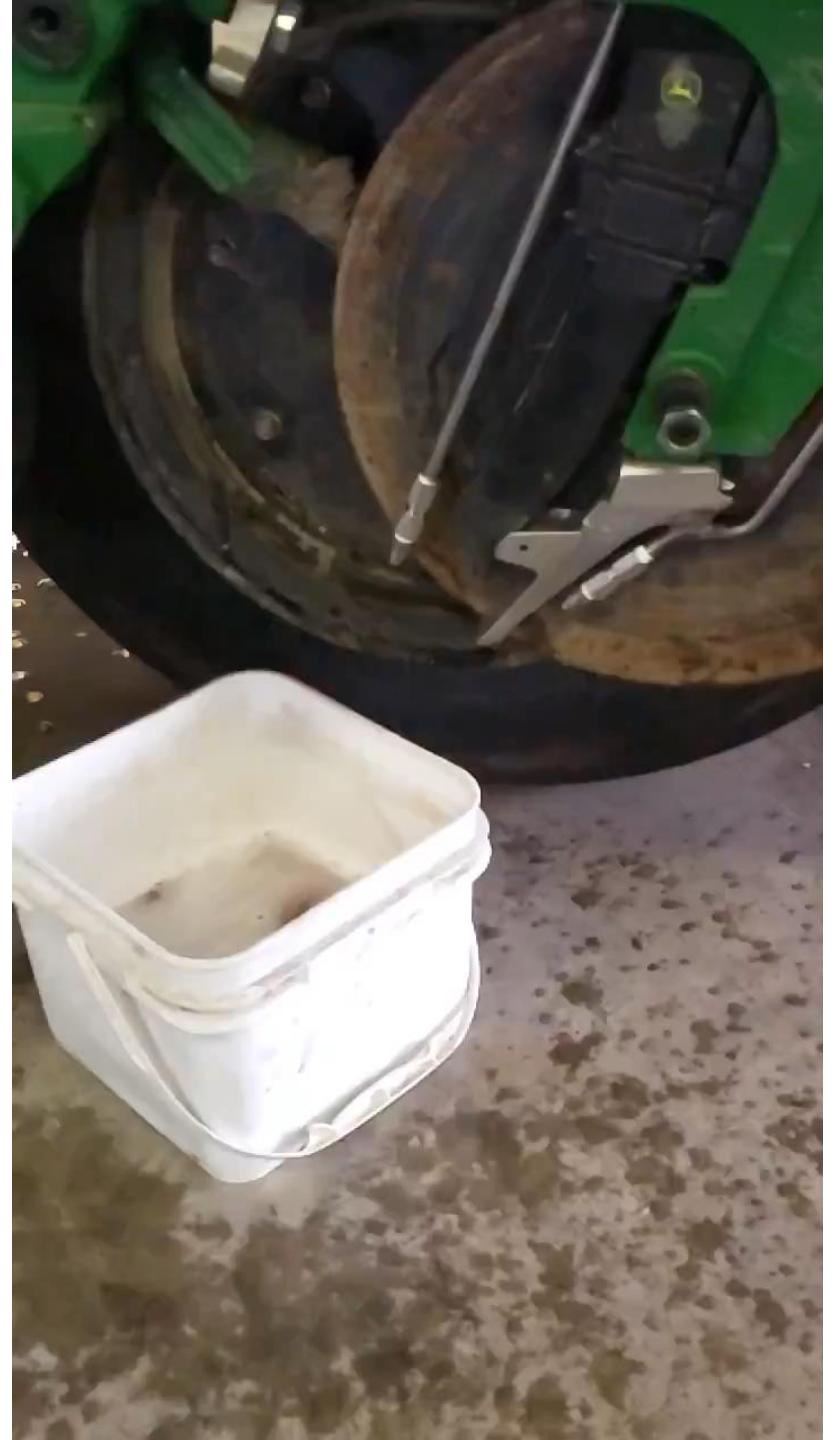
Right Menu: Diagnose, Population, Setup

Area in upper right corner will open **GPS Communication** screen to access **GPS** and **WiFi** settings.

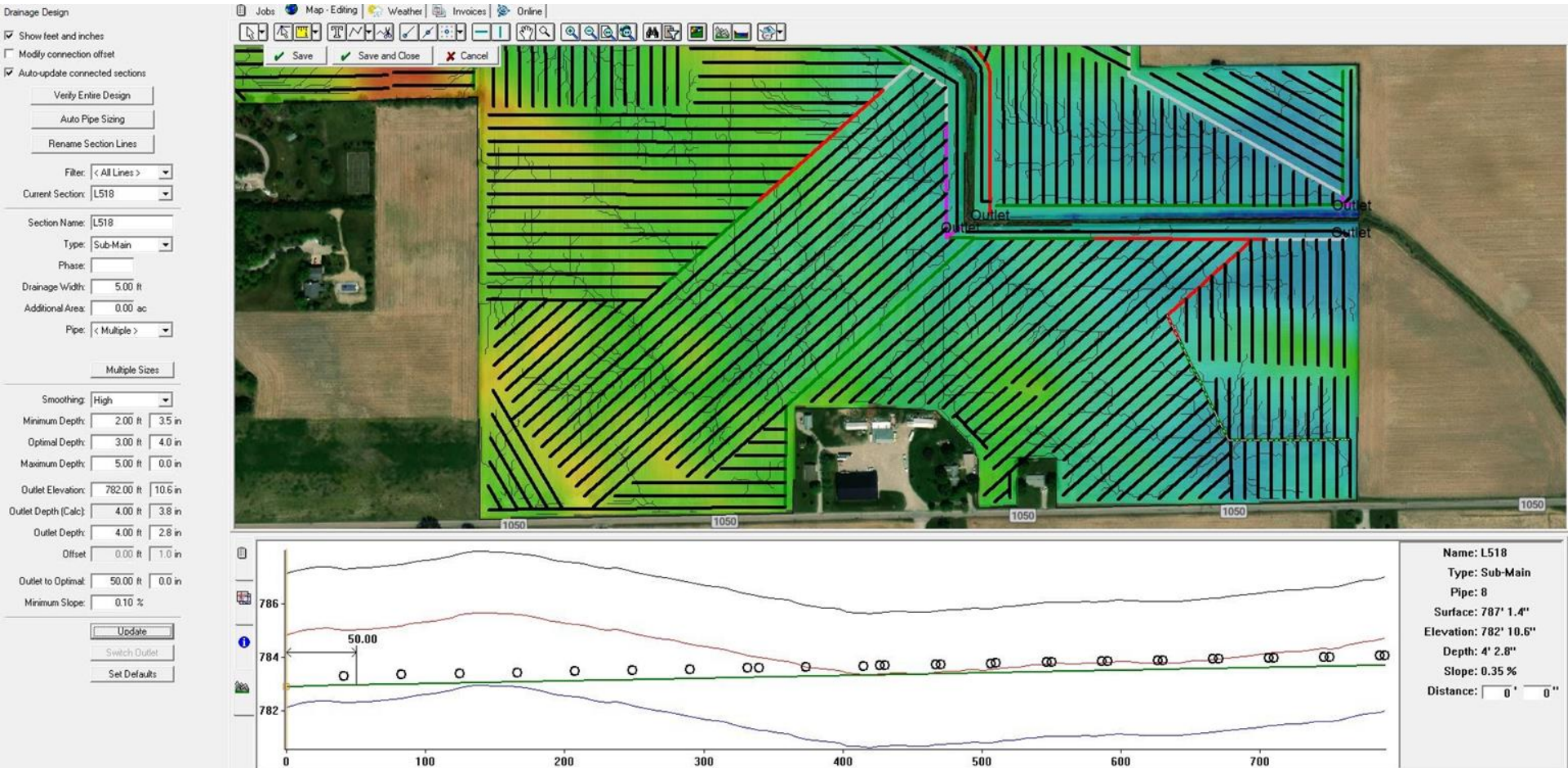
**Control** buttons or widgets display settings of the system. Touching the button will open the **Control Screen**.

This button selects the metric type displayed in the **Mini Chart**. Press this button to change the metric and to display **Row Detail Screen** of the current metric. See **Quick Reference Guide—Row Detail** for more information.





# Farm Drainage Technology



# Autonomous Tractor and Grain Cart





# Green Field Ag



Positioning Farmers for Success!



FOLLOW US ON  
**twitter**



Find us on:  
**facebook**